



**BRUCE A. BLAKEMAN**  
NASSAU COUNTY EXECUTIVE

Nassau County Department of Parks, Recreation and Museums and the  
Agricultural Society of Queens, Nassau & Suffolk Counties present the

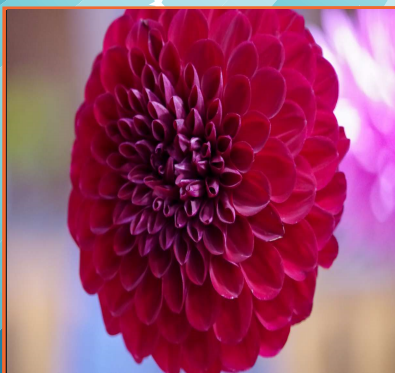


## COMPETITIVE EXHIBIT HANDBOOK

**ENTER YOUR  
BEST,  
COMPETE  
FOR THE  
BLUE RIBBON!**

*The County Fair for All Long Island*

**SEPTEMBER  
16<sup>th</sup>, 17<sup>th</sup>, 18<sup>th</sup>, 2022**



**OLD BETHPAGE VILLAGE RESTORATION**

1303 Round Swamp Road • Old Bethpage • [www.LIFair.org](http://www.LIFair.org) • Like us on Facebook!

BRUCE A. BLAKEMAN  
NASSAU COUNTY EXECUTIVE



DARCY A. BELYEA  
COMMISSIONER OF PARKS,  
RECREATION & MUSEUMS

OFFICE OF THE COUNTY EXECUTIVE  
THEODORE ROOSEVELT EXECUTIVE & LEGISLATIVE BUILDING

June 1, 2022

Dear Exhibitors,

Nassau County proudly hosts the Long Island Fair each fall at the Old Bethpage Village Restoration. As the official New York State-sanctioned County Fair for Queens, Nassau, and Suffolk counties, it is held on the re-created historic Mineola Fairgrounds at Old Bethpage and features the best of old-time county fairs.

Set within the magnificent Exhibition Hall, Long Islanders of all ages exhibit their crafts, artworks, gardening skills, and culinary delights, while vying for the "best in class" blue ribbon. The Competitive Exhibit Handbook offers a contest for everyone and I encourage you, your family and friends to submit entries.

Your participation make this Fair unlike any other on Long Island.

Sincerely,

A handwritten signature in blue ink, appearing to read "B. A. Blakeman", with a long horizontal flourish extending to the right.

Bruce A. Blakeman  
County Executive

# THE LONG ISLAND FAIR

Sponsored by

The Agricultural Society of Queens, Nassau and Suffolk Counties, Inc.

## Board of Directors

Shirley Condry	James McKenna
Joseph A. Demalderis	William Sanok, President
Beagan Gooth	Edward J. Smits, Vice President
Daniel Holmes	Nicholas Thalasinis
Gerald Kessler, Secretary/Treasurer	

June 2022

On behalf of the officers and directors of The Agricultural Society of Queens, Nassau and Suffolk Counties, welcome to the 2022 Long Island Fair, the official New York State Fair for Queens, Nassau and Suffolk Counties.

We hope you will find our latest Competitive Exhibit Handbook interesting and will enter one or more of our categories. It is you and the hundreds of thousands of individuals who have entered their best to be judged at the Long Island Fair during the last 180 years that have made the Long Island Fair what it is, Long Island's premium event.

Don't just enter your best in the Fair for judging; come see what else the Fair offers – great entertainment, educational exhibits, games for the children, tests of skill and speed for young and old. And why stop at being an exhibitor; become a volunteer. Our volunteers are as important to us as our exhibitors. While there wouldn't be a Fair without your exhibits, there couldn't be a Fair without the volunteers who help us assemble and run the Fair each year. You see them with their green ribbons greeting you, staffing the exhibition hall, selling apples, watermelons, gourds, running the children's games and helping out in dozens of different ways. You may volunteer for as many, or few days as you like; and your green ribbon admits you to the Fair every day the Fair is open whether or not you are working that day.

We look forward to seeing you here in September

Best wishes,



William Sanok  
President

# HISTORY OF THE LONG ISLAND FAIR

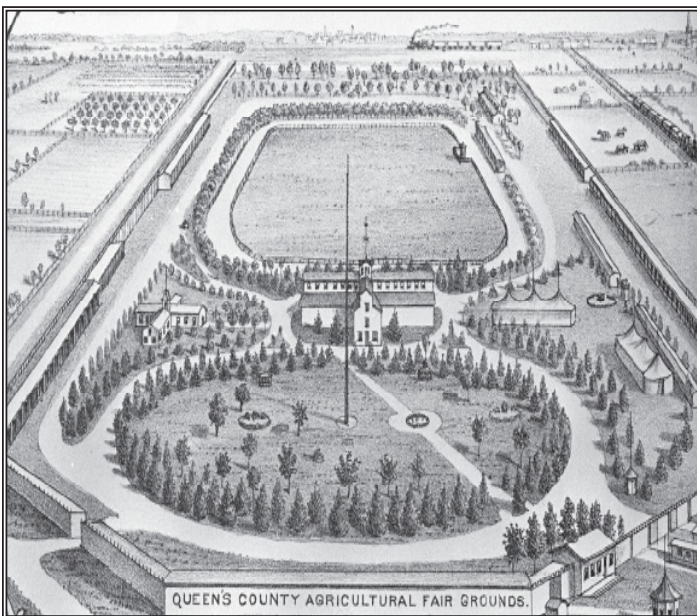
## A 180 YEAR TRADITION

Founded in 1841, The Agricultural Society of Queens, Nassau, and Suffolk Counties is one of the oldest agricultural societies in the United States. Beginning in 1842, the Society sponsored its earliest fair, known then as the Queens County Fair, on vacant lots and member's farms. It was not until 1866 that the Fair found a permanent home at the intersection of Old Country Road and Washington Avenue in Mineola. Built through public subscriptions, the original fairgrounds consisted of livestock barns, carriage sheds, a business office, and an exhibition hall. Designed to be the centerpiece for the fairgrounds, the Exhibition Hall was a large cruciform building with a high central tower capped by a grand eagle weather vane. This building was made to house all of the horticultural, agricultural, and domestic arts displays.

The Queens County Fair was held nearly every Fall until 1899. In this year, Nassau County was created and the Fair changed its name to the Mineola Fair. Over the next 50 years, Nassau County would grow in population, eventually displacing the Fair to make room for the County Court Complex. The Fair then moved to Roosevelt Raceway until 1970.

In 1970, the Fair moved to Old Bethpage Village Restoration, where it was renamed the Long Island Fair. The fairgrounds constructed on the Village's property would replicate the original grounds, including the Superintendents' Office, the only surviving 19th century building from the Mineola Fairgrounds. Also, just like the original, the new Fairgrounds were built through public support. Mrs. J. Alfred Valentine provided the leading citizen gift to a major capital fund in memory of her husband "Al" Valentine, who served as president of the Agricultural Society for many years. The Fairgrounds were completed in 1995 when construction on the replica Exhibition Hall was finished.

No matter its name, The Long Island Fair has been a part of Long Island history for 180 years. Exhibiting, donating, volunteering, and even simply coming in to see what your neighbors can do makes you a part of the tradition.



Drawing of the Original Fair Grounds



The Reconstructed Exhibition Hall



# LONG ISLAND FAIR SUPERINTENDENTS

## Advanced

Mary Nagin, Superintendent

## Agricultural Skills

Peter McLaughlin, Superintendent

## Culinary Arts

Toby Weisman-Kaye, Superintendent

Amanda Ciniglio, Co-superintendent

## Flower Show

Vincent Drzewucki, Co-Superintendent

Susan Dittman, Co-Superintendent

## Fruits and Vegetables

Lorraine Anderson, Co-Superintendent

Fred Anderson, Co-Superintendent

## Hobbies

Shirley Condry, Superintendent

Eleanor Aldrige, Assistant

## Horses

Scott Carter, Superintendent

## Juniors

Barbra Rubin-Perry, Superintendent

Paula Kenny, Asssitant Superintendent

## Needlework

Mary Ann Kofert, Superintendent

## Poetry

J R Turek

## Rabbits and Guinea Pigs

Michael Fiorentino, Superintendent

Cathy Caracciolo, Superintendent

## Scarecrow Contest

Elizabeth Zagorski, Co-Superintendent

Tim Vanwickler, Co-Superintendent

\* Separate Competitive Exhibit Handbook for all animal entries. Please call 516-572-8409 to receive a copy.

# LONG ISLAND FAIR SCHEDULE

## ENTRY FORMS

Advanced and Scarecrow entry forms are due in person or by mail **Wednesday, August 31<sup>st</sup>, 2022 by 4:00 p.m.**

Advanced entry forms can also be submitted ONLINE.

Payment checks must be mailed in payable to the Agricultural Society. Photos of entries must be mailed or emailed in through the website by September 1<sup>st</sup>, 2022

Poetry entries are due **Saturday, September 10<sup>th</sup>, 2022 by 4:00 p.m.** Poetry department entries will **ONLY** be accepted online via email, *please look at the poetry department for details on how to submit your entry.* All exhibitors still must fill out the entry form online at ***www.LIFair.org*** by clicking the **ENTER ONLINE** button before submitting their entry by September 1<sup>st</sup>, 2022

Online entry forms are due

**Thursday, September 1<sup>st</sup>, 2022 by 4:00 p.m.**

**NO ENTRY FORMS ACCEPTED AFTER THESE DATES**

## EXHIBIT DELIVERY

**Friday, September 9<sup>th</sup>, 2022 from 8:00 a.m. - 5:00 p.m.**

**Saturday, September 10<sup>th</sup>, 2022 from 8:00 a.m. - 5:00 p.m.** Advanced Hobbies & Needlework, Hobbies,

Juniors, Needlework & Young Adult.

**Wednesday, September 14<sup>th</sup>, 2022**

**from 8:00 a.m. - 5:00 p.m.**

Fruits, Vegetables, Advanced Culinary, Culinary and Flower show.

**Thursday September 2<sup>nd</sup> from 3:00 p.m. - 5:00 p.m. Rabbits**

## EXHIBIT DELIVERY

**Saturday, September 17<sup>th</sup>, 2022 from 7:00 a.m. - 9:00 a.m.**

Horse show

## FAIR DATES

Friday, September 16<sup>th</sup>, 2022 - 10:00 a.m.-5:00 p.m.

Saturday, September 17<sup>th</sup>, 2022 -10:00 a.m.-5:00 p.m.

Sunday, September 18<sup>th</sup>, 2022 - 10:00 a.m.-5:00 p.m.

## EXHIBIT PICK-UP

**Sunday, September 18<sup>th</sup>, 2022**

**Start at 5:30 p.m. - 7:00 p.m.**

All exhibits at the fairgrounds building

**\*Vegetable & Fruit removal is encouraged**

**\*Flower Show, Horses, Rabbit**

**removal is MANDATORY**

**September 19<sup>th</sup> to September 20<sup>th</sup>, 2022**

**from 8:00 a.m. - 7:00 p.m.**

All exhibits are available at the Fairgrounds building **ONLY** for pick up.

**REMOVAL IS STRONGLY ENCOURAGED ON SUNDAY SEPTEMBER 18<sup>TH</sup>, THE LONG ISLAND FAIR IS NOT RESPONSIBLE FOR ANY ITEMS. EXHIBITS THAT HAVE NOT BEEN PICKED UP BY SEPTEMBER 20<sup>TH</sup>, 2022 WILL BE DISCARDED OR DONATED.**

Please allow 6-8 weeks after the close of the fair to receive premium prizes.

# 2022 LONG ISLAND FAIR COLORING CONTEST

## Children's coloring contest !

To participate in this contest download the coloring contest page at [lifair.org](http://lifair.org). No winners will be chosen for this contest.

*This contest is for children between the ages of 3 to 10 years old. Recieve 1 free pass per exhibitor, 1 entry is permitted in this contest.*

Your coloring contest must be mailed by August 31<sup>st</sup>, 2022, coloring contest will not be accepeted after this date.

## General Guidelines:

All entries must meet Long Island Fair standards. Any entries not following the Long Island Fair guidelines will be disqauilfied.

If entering more than one item in the same class, only one will be judged. The other will be for display purposes only.

## THE LONG ISLAND FAIR NEEDS YOU TO VOLUNTEER!

**AGES 14 AND UP**

HELP AT CHILDREN'S RACES  
WELCOME VISITORS  
ASSIST AT INFORMATION BOOTH  
WORK THE GAMES OF SKILL  
BRING WATER TO THIRSTY ANIMALS  
SELL QUILT RAFFLE TICKETS



WORK AT THE FLYING HORSES CAROUSEL  
JUDGE CORN HUSKING CONTEST  
HELP WITH DISPLAYS  
DEMONSTRATE A CRAFT  
SELL CHANCES FOR THE LARGEST PUMPKIN  
SELL APPLES, GOURDS AND PUMPKINS

For a Volunteer application:  
Please visit [Lifair.org](http://Lifair.org)

## TIPS TO ENHANCE THE EXHIBITORS EXPERIANCE

\*TWO FREE PASSES PER EXHIBITOR! *WHEN YOU ARRIVE FOR INTAKE, MAKE SURE YOU STOP AT THE TICKET DESK IN THE FAIRGROUNDS BUILDING TO RECEIVE YOUR 2 FREE PASSES!*

\* Friday and Saturday drop off For The Advanced Department, Hobbies, Needlework, Juniors and Young Adult

\*Return of the fan favorite scarecrow contest

\*New additional classes added in Juniors, Hobbies, Vegetables and Flower show department

\**Poetry contest* (Please review this department page, for further informatiom how to enter)

\*Easy online entry submission available at [lifair.org](http://lifair.org) (Click the enter online button and following the directions)

\*Separate handbook for rabbits, & horses

## STATE OF NEW YORK DEPARTMENT OF AGRICULTURE AND MARKETS

### STANDARDS FOR CONDUCT OF FAIRS

§ 350.1 Fair sponsor; definition. For purposes of this Part a fair sponsor shall mean any organization that receives money from the State for the promotion of agriculture and domestic arts pursuant to Article 24 of the Agriculture and Markets Law.

§ 350.2 No fee for 4-H, F.F.A., junior fair or school department exhibits. No entry fee shall be charged for 4-H Club, F.F.A. and junior fair exhibits entered for competition in their own classes, or for entries in the school department.

§ 350.3 Prompt, full payment of premiums. All premiums advertised and awarded must be paid promptly and in full, without deduction in the guise of donations or otherwise, notwithstanding any statement to the contrary or in modification thereof announced or stated in the premium book.

§ 350.4 No premium for unworthy exhibit. No premium should be awarded by any judge or paid by any fair sponsor for an unworthy exhibit.

§ 350.5 Premium amount to attract well-balanced exhibits. The amount of premium offered in the various departments should be such as to secure well-balanced exhibits, in the light of the types of agriculture carried on in the territory served by the fair.

§ 350.6 No exhibits by judges in departments they oversee. No judges shall be permitted to enter exhibits in competition for premiums in the department with which they are connected.

§ 350.7 Exhibits to be plainly labeled. All exhibits must be plainly labeled so that the full significance of the exhibits will be made clear.

§ 350.8 Reexhibition in domestic department.

No article shall be exhibited in the domestic department if it has been previously exhibited therein, unless permitted by official action of the board of directors of the fair sponsor.

§ 350.9 Ownership of exhibits entered in fairs and shows.

(a) All exhibits shall be entered in the name of the exhibit owner; provided, however, that any animal exhibit entered in a youth fair, youth exhibition, or 4-H show or exhibition may be entered in the name of the exhibitor.

(b) Exhibits shall have been owned by the exhibitor for a period of at least 30 days prior to entry of the exhibit; provided, however, that any animal exhibit entered in a youth fair, youth exhibition or 4-H show or exhibition shall have been in the care of the exhibitor for a period of at least 60 days prior to entry of the exhibit. (c) Proof of ownership of any exhibit shall be provided by the exhibitor, upon request, to the fair sponsor. (d) The fair sponsor may limit the number of breeds shown by any exhibitor.

§ 350.10 Rejection or refusal of an exhibit. Any fair sponsor shall reserve the right to reject or refuse, and to order the removal of, any exhibit which, in the opinion of its board of directors, is not eligible or worthy of showing or has not met the livestock health requirements set forth in Part 351 of this Title.

§ 350.11 Compliance with and enforcement of livestock health requirements. Each fair sponsor shall comply with and enforce the livestock health requirements set forth in Part 351 of this Title.

### RULES & REGULATIONS

1. Unless otherwise instructed, all exhibits must be in place by 9:00 a.m. Thursday, September 15<sup>th</sup> and remain until 5:00 p.m. Sunday, September 18<sup>th</sup>. Items removed earlier will not receive premiums awarded, if placed in any department.

2. Transportation of the entries to and from the Fair is the responsibility of the exhibitor. However, an individual does not have to deliver their own exhibit.

3. All judging will take place prior to the opening of the Fair. Conversing with judges before or during judging is prohibited. Decisions of the judges are final.

4. Premiums will be awarded only when there are two or more entries in a class. Judges will award no premiums to inferior animals or items no matter the competition.

5. Exhibitors, unless otherwise indicated, will be issued TWO one time admission passes upon delivery of entries. **The exhibitor is responsible to pick up their passes when they delivery their entries. No refunds or exceptions will be given.**

6. The Society reserves the right to reject any or all entries after a suitable and educational exhibit is reached or may open any department to make the exhibit suitable and attractive.

7. Exhibitors must provide their own hay, bedding, & grains.

8. Judges are required to examine the rules, regulations, guidelines and standards, and conform to them in every particular as near as possible, and in awarding premiums to observe closely the printed lists of entries.

9. Superintendents will exercise all possible care for safety of the entries.

The Society assumes no responsibility for loss or damage from any cause and entries are made and accepted with this understanding.

10. The Society reserves the right of rejecting any premium awarded on what may seem in their judgment to be an irregular or questionable entry.

11. All premiums will be paid by check. **Premiums are paid solely from the records of the judge's book. Ribbons or exhibit cards hold no value as to the payment of premiums.** Checks will be mailed after the Fair. Please allow premium checks to be mailed 6-8 weeks after the close of the fair. All claims for prizes or ribbons must be made within 60 days from the closing of the Fair.

12. The Society reserves the sole and absolute right to interpret these conditions and regulations and arbitrarily settle and determine all matters and questions arising out of, or connected with or incident to the fair. Also to refuse and to cancel any entries, disqualify exhibitors, prohibit exhibition of entries and cancel awards of prizes, as the Society may deem expedient.

**13. Entry pick up is Sunday, September 18<sup>th</sup>, 2022 between 5:30 p.m. - 7:00 p.m. On Monday, September 19<sup>th</sup> to 20<sup>th</sup> 8:00 a.m. - 7:00 p.m. in the Fair grounds building. We are not responsible for broken or missing items. All items must be picked up by September 20<sup>th</sup>, 2022. The County and the Society assumes no responsibility for loss or damage from any cause. Items remaining in the Fair grounds after September 20<sup>th</sup>, 2022 will be donated or discarded.**

# SCARECROW MAKING CONTEST

## BUILD IT ON THE FAIRGROUNDS

### SEPTEMBER 16<sup>TH</sup> & 17<sup>TH</sup>

First: \$25    Second: \$15    Third: \$10

#### Guidelines

- To be built on the fairgrounds during the fair
- Teams will be given a date and time to build and will be notified by mail or email.
- Teams of two-six people
- Teams will be provided straw and basic structure.
- Teams are responsible for providing clothing and any other props. We are not responsible for items that have been removed or broken. Do not use valuable items.
- Teams wishing to keep their props and clothing must claim them between 5:00 p.m. to 6:00 p.m. on Sunday, September 18<sup>th</sup>, 2022
- Unclaimed materials will be discarded.
- Scarecrows reflecting controversial subjects will not be accepted.
- The Long Island Fair reserves the right to remove any scarecrow it deems inappropriate.
- Judging will be done on the last day of the fair in order to properly judge the durability of each scarecrow.

**ENTRY FORM DUE**  
**AUGUST 31<sup>ST</sup>**

#### JUDGING STANDARDS

Originality	30 points
Durability	30 Points
Creativity	20 points
Design	20 points

## SCARECROW BUILDING CONTEST ENTRY FORM

Last Name: \_\_\_\_\_ First Name: \_\_\_\_\_

Mailing Address: \_\_\_\_\_

City: \_\_\_\_\_ State: \_\_\_\_\_ Zip: \_\_\_\_\_

Daytime Phone Number: \_\_\_\_\_ Organization Name: \_\_\_\_\_

Number of team members: \_\_\_\_\_ Team Name (optional): \_\_\_\_\_

Email Address: \_\_\_\_\_

### INSTRUCTIONS

- ~ All entries must be submitted on this Entry Form. Additional forms may be photocopied or found at [www.lifair.org](http://www.lifair.org)
- ~ Entry forms for the Scarecrow contest must be submitted by mail, or by hand, no online entries accepted.
- ~ Forms submitted without complete mailing addresses will not be processed.
- ~ Phone numbers and email addresses will be used for Fair purposes only.
- ~ Space is limited, mail your entry early to secure your spot. **This form must be received by Wednesday, August 31<sup>st</sup>**
- ~ Entrants will have time on either Friday, September 16<sup>th</sup> or Saturday, September 17<sup>th</sup> to complete the building of their entry. Please indicate below your first, and second choices for your building time:

Friday morning ☐

Saturday Morning ☐

- ~ Participant passes for the team members and instructions will be mailed to you prior to the opening of the Fair.



# CULINARY ARTS

ENTRIES ACCEPTED WEDNESDAY, SEPTEMBER 14<sup>TH</sup>, 2022  
FROM 8:00 A.M. TO 5:00 P.M.

First: \$3 Second: \$2 Third: \$1

**ENTRY FORM DUE SEPTEMBER 1<sup>ST</sup>**

## GENERAL GUIDELINES

Only 1 entry per class  
All items must be entered in the name of the maker.  
Entries no longer worthy of exhibit will be discarded.  
Only 1 entry per batch allowed, multiples will not be judged.  
Department is for ages 14 and up.  
Entry form may be submitted online, visit [www.lifair.org](http://www.lifair.org).

## JAR ENTRY GUIDELINES

Entry must be in 1 full jar with properly sealed lid.  
Remove paraffin.  
All jars must be labeled to be judged.  
Judge reserves right to disqualify based on condition of jar.

## JUDGING STANDARDS FOR JAR ENTRIES

Appearance: Color, clearness, pack arrangement  
Container: Appropriateness, neatness, label  
Quality of Contents: Taste, texture

## BAKED GOODS GUIDELINES

Only 2 entries in baked goods permitted  
Complete recipe must be typed & taped to bottom of dish.  
Must not exceed 9" in height  
Baked goods will not be returned.  
Only whole items will be accepted.  
Box mixes & kits are not permitted.  
Display space limited.  
Items should be on a small non-returnable dish in a sealable plastic bag.  
Recipes for winning entries may be compiled into a book and sold at future fairs to benefit The Fairgrounds.

## JUDGING STANDARDS BAKED GOODS

General Appearance: size, shape  
Crust: Color, texture, depth  
Crumb: Lightness, moisture, color, grain  
Flavor: Odor, taste

## Class Jar Entries

- 51.100 Grape Jelly
- 51.101 Other Jelly
- 51.102 Single Fruit Jam
- 51.103 Combination Fruit Jam
- 51.104 Marmalade
- 51.105 Fruit Butter
- 51.106 Fruit Preserves
- 51.107 Sweet Pickles
- 51.108 Dill Pickles
- 51.109 Sweet Relish
- 51.110 Mustard
- 51.111 Salsa
- 51.112 Pickled Vegetables, 3 or more mixed
- 51.113 Pickled Vegetables, any one vegetable
- 51.114 BBQ Sauce
- 51.115 Buffalo Sauce
- 51.116 Red Pasta Sauce
- 51.117 Other Sauce

## Class Maple & Apiary

- 51.120 Maple Sugar (1/2 lb.)
- 51.121 Maple Syrup (1 pt.)
- 51.122 Extracted Light Honey, In Jar (1 lb.)
- 51.123 Extracted Medium Honey, In Jar (1lb.)
- 51.124 Extracted Dark Honey, In Jar (1lb.)
- 51.125 Honey Section or Comb (1)
- 51.126 Bees Wax (1/2 lb.)

## Class Yeast Breads

- 51.130 Whole Wheat or Multi-Grain Bread
- 51.131 Ethnic Specialty Bread
- 51.132 Any

## Quick/Tea Breads

### Class 8" loaf or round required

- 51.140 Zucchini Bread
- 51.141 Zucchini Nut Bread
- 51.142 Pumpkin Bread
- 51.143 Banana Bread
- 51.144 Banana Nut Bread
- 51.145 Irish Soda Bread
- 51.146 Corn Bread
- 51.147 Gluten Free Bread
- 51.148 Other Quick Bread

### Class Muffins

- 51.150 Corn Muffins
- 51.151 Fruit Muffins
- 51.152 Nut Muffins
- 51.153 Gluten Free Muffins

### Class Cake

- 51.160 Decorated or Novelty Cake
- 51.161 Cupcakes (4 to a plate)
- 51.162 Cake Pops (6 to a plate)
- 51.163 Any Frosted Cake
- 51.164 Pound Cake, mini loaf
- 51.165 Spice Cake, mini loaf
- 51.166 Coffee cake, mini loaf
- 51.167 Any Unfrosted Cake

### Class Pie

- 51.170 Pie, two crust (8" maximum)
- 51.171 Pie, one crust (8" maximum)

## Class Cookies (5 to a plate)

- 51.180 Brownies
- 51.181 Ethnic Cookies
- 51.182 Butter Cookies
- 51.183 Oatmeal Cookies
- 51.184 Chocolate Chip Cookies
- 51.185 Fancy Cookies
- 51.186 Peanut Butter Cookies
- 51.187 Gluten Free
- 51.188 Any other not listed

## Class Fudge

- 51.190 Chocolate
- 51.191 Any Other

# VEGETABLES

ENTRIES ACCEPTED WEDNESDAY, SEPTEMBER 14<sup>TH</sup>, 2022 FROM 8:00 A.M. - 5:00 P.M.

Support for Vegetable premium prizes contributed in memory of Mary A. & John J. Zukofske

## GENERAL GUIDELINES

Only 1 entry per class  
All entries must be grown on Long Island.  
All entries must be labeled correctly.  
Root Classes entries should be washed or brushed.  
Tops must be left on roots & bulbs, but may be cut later by Superintendent.  
Clay pots preferred, plastic pots must be black or dark colored.  
Superintendent reserves the right to discard or refresh entries as needed.  
Entry form may be submitted Online, visit lifair.org

## VEGETABLE DISPLAY GUIDELINES

Individual or single family exhibitors use "A".  
Club or group exhibitors, including commercial growers, use "B".  
Set-up must be completed by 5:00 p.m.

## ENTRY FORM DUE SEPTEMBER 1<sup>ST</sup>

### DISPLAY CLASS JUDGING STANDARDS

Quality of Produce	35
Design & Appearance	40
Quantity & Variety of Vegetables	15
Correct Name & Trueness to Type	10

### COLLECTIONS JUDGING STANDARDS

Quality of Produce	50
Number of Vegetables/Varieties	30
Correct Name & Trueness to Type	20

### INDIVIDUAL CLASS JUDGING STANDARDS

Uniformity in size & color, Freedom from disease, blemishes, and mechanical injury	50
Correct Name & Trueness to Type	50

## 12.100 A or B - Display of Vegetables, Roots, & Fruits

First: \$150 Second: \$125 Third: \$100

Display for effect

Occupies flat space approximately 4' wide, 4' deep, and 3.5' high  
Baskets/accessories may be included to increase attractiveness  
Non-edible vegetable material, i.e. flowers or gourds, are allowed

Display must remain fresh for the length of the Fair

Perishable vegetables should be potted

## 12.101 A or B - Display of Herbs

First: \$75 Second: \$50 Third: \$35

Herbs must be raised by exhibitor

Occupies space approximately 8 sq.ft. on step stands

Dried and/or potted plants may be used

## 12.102 A or B - Collection of Historic Varieties (Pre 1890)

First: \$30 Second: \$20 Third: \$10

Must include 6 or more historic varieties

Occupies space approximately 8 sq.ft.

Perishable vegetables should be potted

## 12.103 A or B - Tray or Basket of Fall Vegetables

First: \$30 Second: \$20 Third: \$10

Must include 6 or more types of vegetables

Occupies space approximately 18" wide, 12" deep, 15" high

Tray or basket of choice, however it must be flat and not plastic

Greens may be used to enhance the display

Display must remain fresh for the length of the Fair

Perishable vegetables should be potted

## 12.104 A or B - Recipe Vegetable Display

First: \$30 Second: \$20 Third: \$10

Recipe selected must be included in display

Occupies 18"x18" table space

Vegetables, grains, and/or herbs must be grown by exhibitor

Recipe must include 4 or more exhibitor grown items

If desired a max of 3 non-perishable items, i.e. bottled oils or salt may be included

Stock, meats, and the prepared recipe are not permitted

Display must include a woven basket of natural materials

## COLLECTIONS GUIDELINES

Equal quantity of each variety to fill display space

Display space is 2sq.ft except pumpkins & squash which is 4sq.ft.

Each variety should be properly identified

First: \$30 Second: \$20 Third: \$10

Class	Vegetable	Varieties
12.110	Beans	Minimum of 3
12.111	Cabbage	Minimum of 3
12.112	Cucumbers	Minimum of 3
12.113	Peppers	Minimum of 3
12.114	Tomatoes	Minimum of 3
12.115	Pumpkins	Minimum of 4
12.116	Squash	Minimum of 4
12.117	Carrots, Tops On	Minimum of 3
12.118	Beets, Tops On	Minimum of 3
12.119	Chinese Vegetables	Minimum of 6

## BIGGEST OF THE FAIR

Class	Qty.	SQUASH
12.400	1	Heaviest Squash, soft stem

First: \$200 + \$1 per lb. over 300lbs.

Second: \$75 Third: \$50

Class	Qty.	SUNFLOWER HEAD
12.401	1	Largest diameter
12.402	1	Largest diameter, Juniors

First: \$10 Second: \$7 Third: \$5

Class	Qty.	TOMATO
12.403	1	Heaviest Tomato

First: \$10 Second: \$7 Third: \$5

## VEGETABLES - INDIVIDUAL CLASSES

Potatoes - First: \$15 Second: \$10 Third: \$5

### Class Qty. Long Island Potatoes

12.200	10	Any Long Island Early
12.201	10	Any Long Island Late
12.202	10	Sweet/Yam

### Class Qty. Roots & Tubers

12.210	3	Beets, short/medium, for table use
12.211	4	Beets, large, for table use
12.212	4	Turnips/Rutabagas, for table use
12.213	4	Carrots, short/medium
12.214	4	Carrots, long
12.215	4	Parsnips
12.216	4	Onions, yellow
12.217	4	Onions, white
12.218	4	Onions, red
12.219	3	Leek Bulbs
12.220	4	Garlic Bulbs
12.221	4	Elephant Bulbs
12.222	5	Shallots
12.223	4	Radish Roots, red skinned
12.224	10	Jerusalem Artichoke
12.225	1 tubers	Peanuts, w/ roots & tops

### Class Qty. Cole Crops

12.230	2 heads	Cauliflower, white
12.231	2 heads	Cauliflower, purple
12.232	2 heads	Broccoli
12.233	1 plant	Brussels Sprouts, cut
12.234	2 heads	Cabbage, late market/storage
12.235	2 heads	Cabbage, red
12.236	2 heads	Cabbage, drum head
12.237	2 heads	Cabbage, Chinese
12.238	1 plant	Kohlrabi, w/ tops

### Class Qty. Tomatoes

12.240	3	Large
12.241	3	Plum
12.242	12	Cherry, red
12.243	12	Cherry, yellow
12.244	12	Pear, red
12.245	12	Pear, yellow

### Class Qty. Eggplant

12.250	3	Purple
12.251	3	Open Pollinated

### Class Qty. Podded Vegetables

12.260	10 pods	Lima Beans
12.261	10 pods	Soybeans
12.262	10 pods	String Beans, flat type
12.263	10 pods	Horticulture/Shell Beans
12.264	10 pods	Bush Beans, round green
12.265	10 pods	Bush Beans, wax or yellow
12.266	10 pods	Okra
12.267	10 pods	Sugar Snap Peas

### Class Qty. Corn

12.270	3 ears	Sweet, 1 variety
12.271	3 ears	Dried Field, 1 variety

### Class Qty. Cucumbers

12.280	3	Any Slicing
12.281	3	Any Pickling
12.282	6	West India Gherkins

All Other Classes - First: \$5 Second: \$3 Third: \$2

### Class Qty. Peppers

12.290	3	Sweet
12.291	3	Hot
12.292	3	Bell

### Class Qty. Pumpkins & Squash

12.300	2	Pumpkins, Youngs' Beauty/Connecticut
12.301	2	Field
12.302	2	Pumpkins, Cheese
12.303	2	Pumpkins, Sugar
12.304	2	Pumpkins, Hard Stem Cushaw
12.305	2	Squash, Summer, Yellow Neck
12.306	2	Squash, Summer, Patty Pan
12.307	2	Squash, Summer, Zucchini
12.308	2	Squash, Winter, Acorn
12.309	2	Squash, Winter, Spaghetti
12.310	2	Squash, Winter, Butternut/Buttercup
12.311	2	Squash, Hubbard type, any named
12.312	2	Squash, Cocozelle/Cucuzzi/Caravazzi
12.313	4	Squash, ornamental
12.314	1 each	Gourds, mini pumpkins
12.315	1 each	Gourds, ornamental, minimum 6 varieties

### Class Qty. Melons

12.320	1	Watermelon
12.321	1	Cantaloupe
12.322	1	Honeydew

### Class Qty. Potted Herbs

12.330	1 plant	Sweet Basil
12.331	1 plant	Chives
12.332	1 plant	Dill
12.333	1 plant	Parsley
12.334	1 plant	Oregano
12.335	1 plant	Rosemary
12.336	1 plant	Thyme
12.337	1 plant	Any other herb not listed

### Class Qty. Potted Vegetables

12.340	1 plant	Swiss Chard
12.341	1 plant	Lettuce, Loose leaf
12.342	1 plant	Lettuce, Crisphead
12.343	1 plant	Lettuce, Loose headed
12.344	1 plant	Any other not listed

### Class Miscellaneous

12.345		Any vegetable not listed
12.346		Any historic/heirloom vegetable not listed
12.347		Freaky Fruit or Vegetable (any fruit or vegetable that is mishaped )

### Class Qty. Juniors

12.348	3	Tomatoes
12.349	2	Peppers
12.350	1	Pumpkins
12.351	1	Squash
12.352	5 pods	Potted Herbs
12.353	2 ears	Corn
12.354		Freaky fruit or Vegetable not listed (Mishaped)

# FRUITS - COMMERCIAL GROWERS

ENTRIES ACCEPTED WEDNESDAY, SEPTEMBER 14<sup>TH</sup>, 2022 FROM 8:00 A.M. - 5:00 P.M.

## ENTRY FORM DUE SEPTEMBER 1<sup>ST</sup>

### GENERAL GUIDELINES

Only 1 entry per class.  
All entries must be raised on Long Island.  
All entries must be labeled correctly.  
Superintendent reserves the right to discard or refresh entries as needed.  
Entry form may be submitted Online visit [www.lifair.org](http://www.lifair.org)



### JUDGING STANDARDS

Freedom from blemish	30 pts
Color	25 pts
Size	15 pts
Form	15 pts
Condition	15 pts

\*Entries that score less than 70 will be disqualified

### DISPLAY CLASS JUDGING STANDARDS

Freedom from blemish	25 pts
Color	20 pts
Size	10 pts
Form	10 pts
Condition	10 pts
Kinds & Varieties	10 pts
Attractiveness	15 pts

## FRUIT DISPLAYS

### **11.100 - Roadside Stand Fruit Display**

First: \$125 Second: \$100 Third: \$75

Occupies a 30 sq.ft. space on step stands

Props, baskets, etc. may be used to add attractiveness

Fruits should be arranged for customer appeal

### **11.101 - Unique Fruit Display**

First: \$100 Second: \$75 Third: \$50

Occupies a 16 sq.ft. space on step stands

Background and props may be used to add educational value

### COLLECTIONS GUIDELINES

Use one plate for each variety of fruit  
4 fruits or 2 clusters per plate  
Each variety should be properly identified

### Collections

First: \$15 Second: \$12 Third: \$8

### Class Varieties Peaches

11.109	5	Late Varieties
11.110	3	Introduced before 1970
11.111	3	Introduced after 1970

### Class Varieties Apples

11.102	5	Fall
11.103	5	Winter
11.104	5	Turn of the 20 <sup>th</sup> Century
11.105	5	Introduced after 1970

### Class Varieties Grapes

11.112	3	Dessert Grapes, Turn of the 20 <sup>th</sup> Century
11.113	3	Dessert Grapes, Introduced 1900-1970
11.114	3	Dessert Grapes, Introduced after 1970
11.115	3	Wine Grapes

### Class Varieties Pears

11.106	5	Any named
11.107	3	Any named
11.108	5	Turn of the 20 <sup>th</sup> Century

### Class Varieties Grape Collections

11.116	5	Dessert
11.117	5	Wine
11.118	3 of each	Seedless, Wine, Seeded Dessert



## FRUITS - COMMERCIAL GROWERS

First: \$5 Second: \$3 Third: \$2

### Class Apples - 1 plate of 4 apples

11.200 Acey-Mac  
11.201 Braeburn  
11.202 Baldwin  
11.203 Cameo  
11.204 Cortland  
11.205 Delicious, Red  
11.206 Early Fuji  
11.207 Empire  
11.208 Fortune  
11.209 Fuji  
11.210 Gala  
11.211 Ginger Gold  
11.212 Gravenstein  
11.213 Golden Russet  
11.214 Honey Crisp  
11.215 Idared  
11.216 Jonagold  
11.217 Jonomac  
11.218 Macoun  
11.219 McIntosh  
11.220 Melrose  
11.221 Mutzu  
11.222 Newtown Pippin  
11.223 Northern Spy  
11.224 NY 674  
11.225 Pink Lady  
11.226 Razor Russet  
11.227 R.J. Greening  
11.228 Roxbury Russet  
11.229 Sansa  
11.230 Shizuka  
11.231 Spartan  
11.232 Spigold  
11.233 Winesap  
11.234 Zestar  
11.235 Any other Winter  
11.236 Any other Fall

### Class Pears - 1 plate of 4 pears

11.237 Aurora  
11.238 Bartlett  
11.239 Bosc  
11.240 Comice  
11.241 Dumont  
11.242 Gorham  
11.243 Highland  
11.244 D'Anjou  
11.245 Any other named



### Class Peaches - 1 plate of 4 peaches

11.246 Blake  
11.247 Encore  
11.248 Ernies Choice  
11.249 Fall Late  
11.250 Glohaven  
11.251 Jersey Queen  
11.252 Lady Nancy  
11.253 Late Rose  
11.254 Laurol  
11.255 Loring  
11.256 M.A. Blake  
11.257 Redskin  
11.258 Rusten Red  
11.259 Sweet Sue  
11.260 White Hale  
11.261 Any other named  
11.262 Any Nectarines

### Class Plums - 1 plate of 4 plums

11.263 European Type  
11.264 Japanese Type

### Class Dessert Grapes - 2 clusters

11.265 Concord, seeded  
11.266 Concord, seedless  
11.267 Delaware  
11.268 Suffolk Red  
11.269 Any other named seeded  
11.270 Any other named seedless

### Class Wine Grapes - 2 clusters

11.271 Pinot Noir  
11.272 Chardonnay  
11.273 Riesling  
11.274 Cabernet Sauvignon  
11.275 Sauvignon Blanc  
11.276 Gewurztraminer  
11.277 Vinifer variety  
11.278 Red Hybrid  
11.279 White Hybrid

### Class Berries - 1 pint basket

11.280 Raspberries

## FRUITS - HOME GARDENERS

First: \$5 Second: \$3 Third: \$2

### GENERAL GUIDELINES

Only 1 entry per class.  
Only 2 entries per household per class except where noted.  
All entries must be raised on Long Island.  
All entries must be labeled correctly.  
Superintendent reserves the right to discard or refresh entries as needed.

Class	Qty.	Fruit
12.370	1/2 pint	Raspberries, everbearing variety
12.371	2 clusters	Grapes
12.372	3	Apples
12.373	3	Pears
12.374	5	Figs
12.375	3	Quince
12.376	6 stalks	Rhubarb
12.377	3-5	Any other fruit not listed

# FLOWER SHOW

ENTRIES ACCEPTED WEDNESDAY, SEPTEMBER 14<sup>TH</sup>, 2022 FROM 8:00 A.M. - 5:00 P.M.

## ENTRY FORM DUE SEPTEMBER 1<sup>ST</sup>

First: \$8 Second: \$5 Third: \$3

### FLOWER ARRANGEMENT GUIDELINES

Only 1 entry per exhibitor per class.  
Space is limited, spots filled on a first come first serve basis.  
Exhibitors will be informed of their acceptance via a letter in the mail/  
email  
Flower & plant material need not be grown by exhibitor.  
Dried plant material may be treated.  
Artificial plant material is not permitted.  
NY State Protected Plant material is not permitted.  
Entry form may be submitted online, visit [www.lifair.org](http://www.lifair.org).

### FLOWER ARRANGEMENT JUDGING STANDARDS

Appearance: Attractiveness  
Design: Artistic concept, expression, distinction  
Conformance: Follow guidelines

#### **Class 40.100 - Fall Celebration**

A creative arrangement to be displayed on a pedestal  
Pedestal top is 22" in diameter  
Fresh and/or dried plant material  
Underlay may be provided by exhibitor  
Only 4 exhibits will be displayed

#### **Class 40.101 - Autumn Greetings**

A wall arrangement of dried plant material (may be treated)  
24" or less in height and width  
Container, contrived container, picture frame, or plaque  
Underlay may be provided by exhibitor  
NO PRESSED FLOWER PICTURES  
Only 4 exhibits will be displayed

#### **Class 40.102 - Autumn Jewels (Dried or Fresh)**

A petite arrangement not to exceed 5" in height, width and depth  
Dried plant material may be treated  
Background and underlay provided  
Only 13 exhibits will be displayed

#### **Class 40.103 - Holiday Time Winter Greetings**

A petite arrangement not to exceed 5" in height, width and depth  
Background and underlay provided  
Only 8 exhibits will be displayed

#### **Class 40.104 - Little Fantasies (Dried or Fresh)**

Petite arrangement  
8"-10" in height, width, and depth  
Background and underlay provided  
Only 5 exhibits will be displayed

#### **Class 40.105 - Morning Sunshine**

A table segment for breakfast  
Must include a flower arrangement  
Fresh and/or dried plant material  
Must include a place setting with napkin  
No food, flatware, plastic or paper tableware  
No artificial plant material  
Underlay fabric (tablecloth) measuring 24"x26" required  
Only 6 exhibits will be displayed

#### **Class 40.106 - Sip of Tea**

A table segment for lunch  
Must include a flower arrangement  
Fresh and/or dried plant material  
Must include a place setting with napkin  
No food, flatware, plastic or paper tableware  
No artificial plant material  
Underlay fabric (tablecloth) measuring 24"x26" required  
Only 6 exhibits will be displayed

#### **Class 40.107 - Harvest Time**

Open to a group, club, group of families or neighbors, etc.  
An arrangement with fresh and/or dried plant material in  
a black ceramic urn, 12" high, 6.5" diameter placed on a  
pedestal. Pedestal top is 22" diameter. Arrangement may  
extend beyond edge of pedestal by no more than 4" all  
around. The urn is provided to the exhibitor for arrange-  
ment and is property of the Long Island Fair  
Only 4 entries will be displayed.  
Prizes: First: \$30 Second: \$20 Third: \$10

# FLOWER SHOW - INDIVIDUAL CLASSES

## HORTICULTURE GUIDELINES

Only 1 entry per class, except where noted.  
 Entries should be labeled with name and variety.  
 All items must be entered in the name of the grower.  
 NY State Protected Plant material is not permitted.  
 Entries may be discarded at the Superintendent's discretion.  
 Exhibitors must supply a clear colorless bottle or jar of good portion. No foliage is permitted below the waterline.

First: \$5 Second: \$3 Third: \$2

## HORTICULTURE JUDGING STANDARDS

Appearance: Color, form, texture, size, substance,  
 staging, peak of perfection, health, grooming  
 Conformance: Proper identification

### Class Chrysanthemums

- 40.200 Garden Chrysanthemums, not disbudded, 1 branch
- 40.201 Chrysanthemum, any other, disbudded, 1 branch

### Class Dahlias, all entries one bloom except where noted.

- 40.202 Giant Bloom (over 10"), all forms
- 40.203 Large Bloom (8" to 10"), Formal Decorative & Informal Decorative
- 40.204 Large Bloom (8" to 10"), Cactus, Semi-Cactus, Incurved Cactus & Laciniated
- 40.205 Medium Bloom (6" to 8"), Formal Decorative & Informal Decorative
- 40.206 Medium Bloom (6" to 8"), Cactus, Semi-Cactus, Incurved Cactus & Laciniated
- 40.207 Small Bloom (4" to 6"), Formal Decorative & Informal Decorative
- 40.208 Small Bloom (4" to 6"), Cactus, Semi-Cactus, Incurved Cactus & Laciniated
- 40.209 Miniature (under 4"), Formal & Informal decorative
- 40.210 Miniature (under 4"), Cactus, Semi-Cactus, Incurved Cactus & Laciniated
- 40.211 Ball (Over 3.5")
- 40.212 Miniature Ball (2" to 3.5")
- 40.213 Pompom (under 2")
- 40.214 Stellar
- 40.215 Waterlily
- 40.216 Novelty Double
- 40.217 Peony-Flowering
- 40.218 Anemone-Flowering
- 40.219 Novelty, Open
- 40.220 Collarette
- 40.221 Orchid-Flowering
- 40.222 Orchette
- 40.223 Single (Over 2")
- 40.224 Mignon Single (Under 2")

### Class Marigolds

- 40.225 Large Bloom (over 3"), Solid yellow or orange, 1 bloom/spray
- 40.226 Small Bloom (under 3"), Solid yellow or orange, 1 bloom/spray
- 40.227 Small Bloom (under 3"), blend of colors, 1 bloom/spray

### Class Miscellaneous

- 40.228 Amaranthus, 1 bloom/spray
- 40.229 Montauk Daisy, 1 bloom/spray
- 40.230 Zinnia, 1 bloom/spray
- 40.231 Sedum, 1 bloom
- 40.232 Celosia, 1 bloom/spray
- 40.233 Any Flower not listed, Annual, 1 bloom or spray
- 40.234 Any Flower not listed, Annual, up to 4 varieties, 1 bloom or spray.
- 40.235 Any Flower not listed, Bi-Annual, perennial or bulb, 1 bloom or spray
- 40.236 Any Flower not listed, Bi-Annual, perennial, or bulb, up to 4 varieties, 1 bloom or spray

### Class Roses one entry per variety, per class is permitted.

- 40.237 Hybrid Tea/Grandiflora, 1 bloom/spray
- 40.238 Floribunda, 1 bloom/spray
- 40.239 Miniature, 1 bloom or spray
- 40.240 "The Fairy Rose," 1 spray
- 40.241 Any other, 1 bloom/spray

### Class Branches

- 40.242 Ornamental, berried or fruited, 1 branch
- 40.243 Pyracantha (Firethorn), 1 branch
- 40.244 Conifers, 1 branch
- 40.245 Broad Leaf Evergreens, 5/6 different, 1 container
- 40.246 Ilex (Holly), English, 1 branch
- 40.247 Ilex (Holly), Hybrid, 1 branch
- 40.248 Ilex (Holly), Variegated, 1 branch

### Container Grown Plants

- Class** No Succulents or Cacti in classes 40.256-40.261
- 40.249 Flowering Violet in pot, 1 plant (in bloom)
  - 40.250 Flowering Violet, semi-miniature or miniature 1 plant (crown) in pot (in bloom)
  - 40.251 Flowering Violet, trailing, 1 plant, 3 crowns, in pot (in bloom)
  - 40.252 Flowering plants, pot under 6"
  - 40.253 Flowering plants, pot 6"-9"
  - 40.254 Flowering plants, pot 10"-12"
  - 40.255 Foliage plants, pot under 6"
  - 40.256 Foliage plants, pot 6"-9"
  - 40.257 Foliage plants, pot 10"-12"
  - 40.258 Cacti, Christmas (must be in bloom/bud)
  - 40.259 Cacti, pot under 6"
  - 40.260 Cacti, pot 6"-12"
  - 40.261 Succulents, pot under 6"
  - 40.262 Succulents, pot 6"-12"

### Class Plants in Hanging Containers

- 40.263 Flowering plants, pot under 6"
- 40.264 Flowering plants, pot 6"-12"
- 40.265 Foliage Plants, pot under 6"
- 40.266 Foliage Plants, pot 6"-12"

### Class Terrariums and Dish Gardens

- 40.267 Terrarium, Container to measure 10" or under in any direction, 3 or more plants
- 40.268 Terrarium, Container to measure over 10" in any direction, 5 or more plants
- 40.269 Dish Garden Cacti or Succulents, Container to measure 10" or under in any direction, 3 or more plants
- 40.270 Dish Garden Cacti or Succulents, Container to measure over 10" in any one direction, 5 or more plants

### Class Juniors

- 40.271 Dahilas
- 40.272 Marigolds
- 40.273 Zinnas
- 40.274 Roses
- 40.275 Container Grown Plants
- 40.276 Terrariums Dish Gardens 6" or under in any directions, 5 or more plants
- 40.277 Flower arrangement
- 40.278 Fall Celebration

# NEEDLEWORK

ENTRIES ACCEPTED FRIDAY, SEPTEMBER, 9<sup>TH</sup>, 2022 FROM 8:00 A.M.- 5:00 P.M.  
& SATURDAY, SEPTEMBER 10<sup>TH</sup>, 2022 FROM 8:00 A.M - 5:00 P.M.

First: \$5 Second: \$3 Third: \$2

## GUIDELINES

- If submitting more than one item per class, exhibitor must choose which one will be judged and which will be for display only.
- All items must be entered in the name of their maker.
- No family heirlooms.
- Pairs must be submitted together connected by a pin.
- Entry form may be submitted online, visit lifair.org.

## ENTRY FORMS DUE SEPTEMBER 1<sup>ST</sup>

## JUDGING STANDARDS

- General Appearance: clean & pressed, design, attractiveness
- Material: appropriate quality, design, color
- Suitability for Intended Use: materials, thread, design
- Workmanship: Stitches & edges are smooth & even, stitches are appropriate length

## Wall Hanging

~Maximum 24"x26", size includes frame

~Must be wired for hanging

### Class

- 50.200 Embroidered Wall Hanging
- 50.201 Counted Cross, 14 count or finer
- 50.202 Counted Cross, 14 count or finer, motto
- 50.203 Petit Point
- 50.204 Needlepoint, 1 stitch
- 50.205 Needlepoint, 2 or more stitches
- 50.206 Punch Needle (includes Bunka)
- 50.207 Soft Hanging, any embroidery technique (no quilts)
- 50.208 Other

## Quilt Wall Hanging

~Must have sleeve for hanging

~Maximum size 50"x50"

### Class

- 50.209 Patchwork
- 50.210 Applique
- 50.211 Other

## Quilt, Full Size

~Maximum size 78" wide

### Class

- 50.212 Patchwork, hand quilted or machine quilted
- 50.213 Applique, hand quilted
- 50.214 Applique, machine quilted
- 50.215 Other

## Quilt, Crib or Lap

~Note different sizes

### Class

- 50.216 Crib/Lap, maximum size 36"x50"
- 50.217 Miniature, maximum size 24"x24"

## Hooked, Braided, or Punched Item

~Maximum size 4'x6'

~may be framed

### Class

- 50.218 Traditional hooked rug
- 50.219 Other hooked, braided or punched item

### Class

## Afghan, Full Size

- 50.220 Knit Afghan
- 50.221 Crochet Afghan, 1 stitch not incl. border
- 50.222 Crochet Afghan, 2 or more stitches not incl. border
- 50.223 "Mile-a-Minute" Afghan
- 50.224 Other

### Class

## Afghan, Crib or Lap

- 50.225 Knit Afghan 1 or 2 stitches, not incl. border
- 50.226 Crochet Afghan, 1 stitch not incl. border
- 50.227 Crochet Afghan, 2 or more stitches not incl. border
- 50.228 Knit/Crochet Afghan w/ embellishment
- 50.229 Other

## Class

- 50.230 Embroidery, any technique on fabric
- 50.231 Quilted, patchwork hand or machine quilted
- 50.232 Quilted, applique hand or machine quilted
- 50.233 Any other technique

## Pillow

## Class

## Accessories & Miscellaneous

~No plastic canvas

- 50.234 Tablecloth or Runner, hand embroidered
- 50.235 Quilted placemat
- 50.236 Quilted Runner
- 50.237 Holiday Stocking, knit or crochet
- 50.238 Holiday Stocking, any other technique
- 50.239 Handbag or Tote, any technique
- 50.240 Doll's Clothes, complete outfit
- 50.241 Any Accessory, knit
- 50.242 Any Accessory, crochet
- 50.243 Any Accessory, quilted
- 50.244 Handmade Doll or Animal
- 50.245 Hanging Ornament

## Class

## Children's Apparel

- 50.246 Knit Sweater
- 50.247 Knit Baby's Outfit, 2 or more pieces
- 50.248 Knit Poncho
- 50.249 Crochet Poncho
- 50.250 Crochet Baby's Outfit, 2 or more pieces
- 50.251 Crochet Sweater
- 50.252 Sewn Child's Outfit
- 50.253 Sewn Child's Costume
- 50.254 Knit Infant's Hat/Bonnet
- 50.255 Crochet Infant's Hat/Bonnet
- 50.256 Other

## Class

## Adult Apparel

- 50.257 Sewn Adult Outfit
- 50.258 Sewn Adult Costume
- 50.259 Knit Sweater
- 50.260 Knit Vest
- 50.261 Knit Socks
- 50.262 Knit Hat
- 50.263 Knit Scarf
- 50.264 Knit Poncho
- 50.265 Knit Shawl
- 50.266 Other Knit Item
- 50.267 Crochet Sweater
- 50.268 Crochet Vest
- 50.269 Crochet Socks
- 50.270 Crochet Hat
- 50.271 Crochet Scarf
- 50.272 Crochet Poncho
- 50.273 Crochet Shawl
- 50.274 Other Crochet Item

## Class

## Weaving

- 50.275 Any Item (identify on entry form)



# HOBBIES

ENTRIES ACCEPTED FRIDAY , SEPTEMBER 9<sup>TH</sup>, 2022 FROM 8:00 A.M. - 5:00 P.M. &  
SATURDAY, SEPTEMBER 10<sup>TH</sup>, 2022 FROM 8:00 A.M. - 5:00 P.M.

First: \$5 Second: \$3 Third: \$2

## GUIDELINES

- Exhibitors are permitted to submit more than one entry per class, however they may have to choose which entry will be judged and which will be for display only, except where noted.
- All items must be entered in the name of the maker.
- Items depicting nudity are not acceptable.
- Size not to exceed 24"x24" or 576 sq.in., except where noted.
- Entry form may be entered online, visit lifair.org.

## Handcrafts

- Class** No ecology boxes or wall plaques
- 52.200 Woodcraft, carving or inlay (incl. decoys)
- 52.201 Woodcraft, Furniture
- 52.202 Woodcraft, Other
- 52.203 Bead work, Jewelry
- 52.204 Bead work, other
- 52.205 Basket & Reed Work
- 52.206 Decorative Painting, Funtuire
- 52.207 Decorative Paintin, Other
- 52.208 Leaded Glass
- 52.209 Mosaic
- 52.210 Original Hand molded Ceramics
- 52.211 Quilling
- 52.212 Shell Craft, Any
- 52.213 Origami, Any
- 52.214 Paper Mache, Any
- 52.215 Model, kit (protective cover recommended)
- 52.216 Model, original (protective cover recommended)
- 52.217 Project made from recycled materials

## **Class** Scrap Booking

- 52.218 Scrapbook Album: Vacation
- 52.219 Scrapbook Album: Other

## Diorama

- Class** Must be a complete scene  
Include photo if modeling a specific item/scene
- 52.220 Diorama/Miniature Room

## Handmade Dolls & Toys

- Class** Exhibitor must design all components of entry  
Pairs must be entered as 1 and connected
- 52.221 Doll or Animal, other than needlework
- 52.222 Toy, wooden

## **Class** Wreaths

- 52.223 Principally Natural Material
- 52.224 Other Material

## Table Decorations

- Class** No plastic canvas or food
- 52.225 Christmas or Hanukkah
- 52.226 Any Other Holiday

## Ornaments

- Class** Maximum size 6" including hanger
- 52.227 Hanging Ornament, not needlework

## ENTRY FORM DUE SEPTEMBER 1<sup>ST</sup>

### JUDGING STANDARDS

Selection of Material: Project appropriateness,  
texture/ shapes used, color combination  
Originality: Captures attention, materials, ideas  
Quality: Workmanship, neatness, use of techniques  
Overall Presentation: Relativity to intended use,  
appropriately finished

## Original Wall Plaques

- Class** Must be securely wired for hanging  
Size not to exceed 16"x20"
- 52.228 Wall Decoration, no decorative painting
- 52.229 Pressed or Dried Flowers/Plants

## Historic Techniques

- Class** Must be under glass
- 52.230 Silhouettes
- 52.231 Scherenschnitzen, hand cut

## Original Art

Only 1 entry per person per class in this section, but you may  
enter a maximum of 2 pieces (from 2 different class numbers.)  
Maximum size 24"x36" including frame  
Must be under glass (except Oil & Acrylic)

### **Class**

- 52.232 Oil or Acrylic: Landscape/Waterscape/Building
- 52.233 Oil or Acrylic: Still Life
- 52.234 Oil or Acrylic: Human(s)/Animal(s)
- 52.235 Oil or Acrylic: Abstract
- 52.236 Watercolor: Landscape/Waterscape/Building
- 52.237 Watercolor: Still Life
- 52.238 Watercolor: Human(s)/Animal(s)
- 52.239 Pen & Ink or Pencil: Landscape/Waterscape/Building
- 52.240 Pen & Ink or Pencil: Still Life
- 52.241 Pen & Ink or Pencil: Human(s)/Animal(s)
- 52.242 Pastels: Landscape/Waterscape/Building
- 52.243 Pastels: Still Life
- 52.244 Pastels: Human(s)/Animal(s)
- 52.245 Mixed Media
- 52.246 Computer graphic design

## Photography

~Only 1 entry per person per class, but you may submit up to two  
photos (photos must be in different class numbers)  
\*\*\*Cannot be Framed, MUST BE MATTED\*\*\*  
\*\*\*Size Requirement 8X10 must be on 11X14 Mat\*\*\*  
\*\*\*Mats may be hung using pins\*\*\*

### **Class**

- 52.247 Landscape
- 52.248 Waterscape
- 52.249 Building
- 52.250 Still Life
- 52.251 Human(s)
- 52.252 Animals(s)
- 52.253 Candid
- 52.254 Subject: Long Island Landmarks

## YOUNG ADULT AGES 14-17

ENTRIES ACCEPTED FRIDAY, SEPTEMBER, 9<sup>TH</sup>, 2022 FROM 8:00 A.M. - 5:00 P.M. &  
SATURDAY, SEPTEMBER 10<sup>TH</sup>, 2022 FROM 8:00 A.M - 5:00 P.M.

**ENTRY FORM DUE SEPTEMBER 1<sup>ST</sup>**

### Prizes

First: \$5 Second: \$3 Third: \$2

### GENERAL GUIDELINES

- Young Adult Department is for ages 14-17 only. Young adults may enter into any "Adult" contest if there is no category in "Young Adult"
- Exhibitors are permitted to submit more than one entry per class, however they must choose which entry will be judged and which will be for display only.
- Entry must be in the name of the maker.
- Young Adults should enter their culinary entries into the Culinary Department.
- Items not to exceed 4sq.ft. or 576sq.in., except where noted.
- Unclean or unpresentable items will be rejected at intake.
- Entry may be submitted online at [www.lifair.org](http://www.lifair.org).

### Handcrafts

**Class**                      No ecology boxes or wall plaques

- 48.100 Woodcraft, carving or inlay (incl. decoys)
- 48.101 Woodcraft, Furniture
- 48.102 Woodcraft, Other
- 48.103 Bead work, Jewelry
- 48.104 Bead work, other
- 48.105 Basket & Reed Work
- 48.106 Decorative Painting
- 48.107 Leaded Glass
- 48.108 Mosaic
- 48.109 Original Hand molded Ceramics
- 48.110 Quilling
- 48.111 Shell Craft, Any
- 48.112 Origami, Any
- 48.113 Paper Mache, Any
- 48.114 Model, kit (protective cover recommended)
- 48.115 Model, original (protective cover recommended)
- 48.116 Project made from recycled materials

### Photography

~Only 1 entry per person per class, but you may submit up to two photos (photos must be in different class numbers)

\*\*\*Size Requirement 8X10 must be on 11X14 Mat\*\*\*

\*\*\*Mats may be hung using pins\*\*\*

#### **Class**

- 48.117 Landscape
- 48.118 Waterscape
- 48.119 Building
- 48.120 Still Life
- 48.121 Human(s)
- 48.122 Animals(s)
- 48.123 Candid
- 48.124 Subject: Long Island Landmarks

### Original Art

Only 1 entry per person per class in this section, but you may enter a maximum of 2 pieces (from 2 different class numbers. Maximum size 24"x36" including frame

Must be under glass (except Oil & Acrylic)

#### **Class**

- 48.125 Oil or Acrylic: Landscape/Waterscape/Building
- 48.126 Oil or Acrylic: Still Life
- 48.127 Oil or Acrylic: Human(s)/Animal(s)
- 48.128 Oil or Acrylic: Abstract
- 48.129 Watercolor: Landscape/Waterscape/Building
- 48.130 Watercolor: Still Life
- 48.131 Watercolor: Human(s)/Animal(s)
- 48.132 Pen & Ink or Pencil: Landscape/Waterscape/Building
- 48.133 Pen & Ink or Pencil: Still Life
- 48.134 Pen & Ink or Pencil: Human(s)/Animal(s)
- 48.135 Pastels: Landscape/Waterscape/Building
- 48.136 Pastels: Still Life
- 48.137 Pastels: Human(s)/Animal(s)
- 48.138 Mixed Media
- 48.139 Computer graphic design

### Needlework

#### **Class**

- 48.140 Any item knit
- 48.141 Any item crochet
- 48.142 Any item woven
- 48.143 Any Adult Apparel
- 48.144 Any Children's Apparel
- 48.145 Pillow

# JUNIORS

ENTRIES ACCEPTED FRIDAY, SEPTEMBER, 9<sup>TH</sup>, 2022 FROM 8:00 A.M.- 5:00 P.M. &  
SATURDAY, SEPTEMBER 10<sup>TH</sup>, 2022 FROM 8:00 A.M - 5:00 P.M.

## ENTRY FORM DUE SEPTEMBER 1<sup>ST</sup>

### GENERAL GUIDELINES

- Junior Department is for ages 13 & under only.
- Separate judging for ages 6-8 (A), 9-10 (B), 11-13 (C).
- Age MUST be indicated on entry form & entry item.
- Exhibitors are permitted to submit more than one entry per class, however they may have to choose which entry will be judged and which will be for display only.
- Entry must be in the name of the maker.
- Juniors may enter a YA class if no Junior class exists.
- Items not to exceed 4sq.ft. or 576sq.in., except where noted.
- Unclean or unpresentable items will be rejected at intake.
- Entry form may be submitted online at [www.lifair.org](http://www.lifair.org).

### Class Mini Juniors - Ages 5 and under

- 53.100 Paperbag Puppets- Using a paperbag create a puppet. Markers, crayons, construction paper, other materials may be used to create your puppet.
- 53.101 Paperplate Art- Decorate a paper plate any way you want with any materials!
- 53.102 Paper Snowflake- using paper, cut out a snowflake! Punch a hole in the top for hanging!
- 53.103 Button Art- use buttons to create a masterpiece on an 8x11 board, foam or construction paper
- 53.104 Toilet Paper Role Animal- use as many toilet paper rolls as you want to create your favorite animal!
- 53.105 Rock art- Creatively decorate and paint rocks

### Junior Culinary

Class ~See page 9 for Guidelines and Judging Standards

- 53.110 Jelly
- 53.111 Jam
- 53.112 Condiments, including Salsa
- 53.113 Quick Tea Bread
- 53.114 Frosted Cake (must be under 9" high)
- 53.115 Unfrosted Cake (must be under 9" high)
- 53.116 Fancy Decorated Cake (must be under 9" high)
- 53.117 Decorated Sugar Cookie
- 53.118 Oatmeal Cookie
- 53.119 Chocolate Chip Cookie
- 53.120 Other Cookie
- 53.121 Brownies
- 53.122 Two Crust Pie (8" maximum)
- 53.123 One Crust Pie (8" maximum)
- 53.124 Cupcakes
- 53.125 Cakepops (must be under 9" high)
- 53.126 Fudge

### Junior Needlework

Class ~See page 16 for Guidelines and Judging Standards

- 53.127 Needlework
- 53.128 Patchwork
- 53.129 Latch Hook
- 53.130 Applique
- 53.131 Pot Holders

### Prizes

Mini Juniors, Needlework, Hobbies, Art

First: \$5 Second: \$3 Third: \$2

Culinary

First: \$3 Second: \$2 Third: \$1

### Junior Original Art

~Work must be mounted on an 11"x14" mat

~See page 17 for Guidelines and Judging Standards

### Class

- 53.132 Oil or Acrylic
- 53.133 Watercolor
- 53.134 Tempera
- 53.135 Pencil
- 53.136 Crayon
- 53.137 Marker
- 53.138 Colored Pencil
- 53.139 Pen & Ink
- 53.140 Photography

### Junior Hobbies

~See page 17 for Guidelines and Judging Standards

~Connecting block models MUST be glued together

### Class

- 53.141 Woodcraft, Original
- 53.142 Woodcraft, Kit Birdhouse
- 53.143 Woodcraft, Kit Other
- 53.144 Hand Molded Clay
- 53.145 Ceramics
- 53.146 Bird Feeder
- 53.147 Tissue paper art
- 53.148 Shell Craft
- 53.149 Origami
- 53.150 Tye Dye T-Shirt
- 53.151 Braided Friendship Bracelet (attach to a 3x5 index card)
- 53.152 Bead Work (no macrame)
- 53.153 String Art, Any
- 53.154 Decorative Box
- 53.155 Ballon Bowl
- 53.156 Toy Car Maker Bot
- 53.157 Model, kit
- 53.158 Model, original
- 53.159 Legos
- 53.160 Old Bethpage Village Diaroma, Any
- 53.161 Ocean Art Terrarium
- 53.162 Marble Run, Not a kit
- 53.163 Shoebox Room
- 53.164 Dolls, Soft Toys, & Animals
- 53.165 Hand Puppet
- 53.166 Yarn Dream Catcher
- 53.167 Ocean Craft, Any
- 53.168 Nature and Rock art
- 53.169 Snowflake art
- 53.170 Item made from Recycled materials
- 53.171 Original Nature Study; Rock, Shell, & Mineral Collection
- 53.172 Terrarium, Container to measure under 10" in any direction, 3 or more plants

## ADVANCED

ENTRIES ACCEPTED FRIDAY, SEPTEMBER, 9<sup>TH</sup>, 2022 FROM 8:00 A.M. - 5:00 P.M. &  
SATURDAY, SEPTEMBER 10<sup>TH</sup>, 2022 FROM 8:00 A.M. - 5:00 P.M.  
CULINARY ACCEPTED ON WEDNESDAY, SEPTEMBER 14<sup>TH</sup>, 2022 FROM 8:00 A.M. - 5:00 P.M.

First: \$150 Second: \$100 Third: \$50

### GUIDELINES

- Entry Fee: *\$5 per entry; payable to The Agricultural Society.*
- All items must be entered in the name of the maker.
- Entry forms must be submitted with a photograph of entry (except culinary and photography)
- Entries must be easily moved without equipment.
- Items depicting nudity are not acceptable.
- Entry forms received after August 31st, 2022 will not be accepted
- Returned entry fee checks will be subject to \$25.00 processing fee.
- Failure to exhibit entry for any reason shall forfeit all fees paid by the entrant, except where cancellation of classes prevent exhibition of entry.

**ENTRY FORM DUE AUGUST 31<sup>ST</sup>**

This Department is for professionals and students who are serious about their craft. The entry fee for this Department is \$5 per entry. There is NO limit to the number of entries any one person may submit. These classes will be prejudged, except for Bread, Pie, Pickle & photography classes. In order to pre-judge, exhibitors are required to submit photos of their entry along with their entry form. Only in Decorated Cakes may Exhibitors provide a sketch instead of a photo. No photo is needed for the Photography Class. Entries must be able to be moved easily without any equipment. Exhibitors will be contacted only if their items will be displayed at the Fair. Notice will be given at least 5 days prior to the delivery date. Only items exhibited all days of the Fair will be awarded premiums.

### Class Needlework

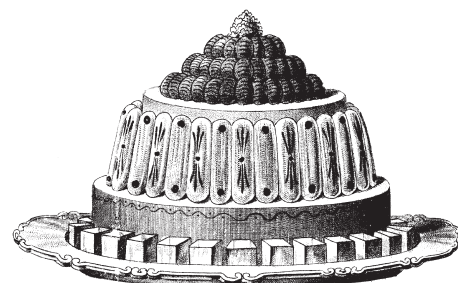
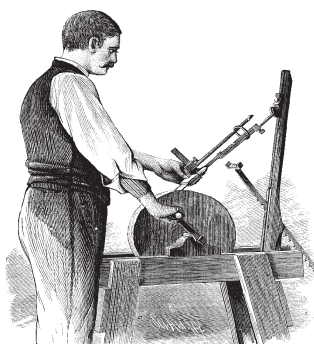
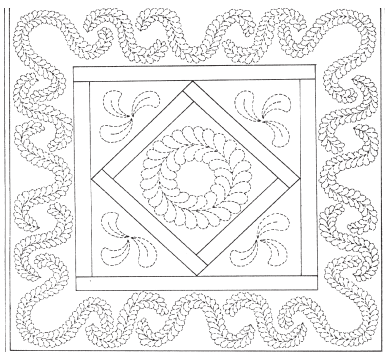
- 60.110 Quilts
- 60.111 Afghans
- 60.112 Apparel
- 60.113 Weaving

### Class Hobbies

- 60.120 Glass
- 60.121 Metal
- 60.122 Ceramic
- 60.123 Wood
- 60.124 Painting (any medium)
- 60.125 Photography- Topic must be human(s) or animal(s)  
must be 8X10, be on 11X14 mat

### Class Culinary

- 60.130 Decorated Cakes
- 60.131 Gingerbread houses
- 60.132 Pies
- 60.133 Pickles





# POETRY

## SUBJECT: LONG ISLAND LANDMARKS

First: \$3    Second: \$2    Third: \$1

### POETRY GUIDELINES

All Poems entered must be on the subject of " Long Island Landmarks"

Only 1 Poem per exhibitor in this department.

You must fill out the online entry form in showworks directed on the Lifair.org website

Paper poems and entry forms mailed in or dropped off will NOT BE ACCEPTED.

After filling out the entry form online, exhibitors then must create one poem with their name, address and one poem with their name at the bottom of the page.

Once both poems are created, the exhibitor must submit their poem via email to  
oldbethpagevillagerestoration@nassaucountyny.gov

All poems must be entered in 14 point Times New Roman.

All poems must be entered in the name of the writer.

Maximum 25 lines, no offensive language, no suggestive language.

First 75 poems will be accepted.

If the exhibitor does not fill out the online entry form, their poem will NOT BE ACCEPTED.

To fill out the online entry form, please visit lifair.org , click on the online entry button. After you click on the button you will be directed to showworks and follow the directions to complete the online entry form.

**ENTRY FORM DUE AUGUST 31ST**

### ADULT POETRY:

CLASS 16.100 FREE VERSE

16.101 RHYME

16.102 HAIKU

### YOUNG ADULT POETRY:

CLASS 16.200 FREE VERSE

16. 201 RHYME

16. 202 HAIKU

### JUNIOR POETRY:

CLASS 16.300 FREE VERSE

16.301 RHYME

16. 302 HAIKU

# ADVANCED ENTRY FORM

\*ENTRY FORMS RECEIVED AFTER AUGUST 31<sup>ST</sup>, 2022 WILL NOT BE ACCEPTED.

Last Name: \_\_\_\_\_ First Name: \_\_\_\_\_

Mailing Address: \_\_\_\_\_

City: \_\_\_\_\_ State: \_\_\_\_\_ Zip: \_\_\_\_\_

Daytime Phone Number: \_\_\_\_\_ Organization Name: \_\_\_\_\_

Email Address: \_\_\_\_\_

Return to: Long Island Fair Entry  
Old Bethpage Village Restoration  
1303 Round Swamp Road  
Old Bethpage, NY 11804

\*Must include picture of entry (except photography class, decorated cakes can be a sketch)

\*Make checks payable to: The Agricultural Society. Failure to exhibit entry for any reason shall forfeit fees paid by the entrant, except where cancellation of classes prevent exhibition of the entry.

\*Returned entry fee checks are subject to \$25.00 processing fee

\* ***The Long Island Fair is not responsible for any entries left after September 20<sup>th</sup>, 2022***

## Official Use Only

Exh. #: \_\_\_\_\_

Entry #: \_\_\_\_\_

## Office Use Only

Exh. #: \_\_\_\_\_

Fee: \_\_\_\_\_

Cash    Check

Check #: \_\_\_\_\_

DEPARTMENT	CLASS NUMBER	CLASS NAME & DESCRIPTION (INCLUDE TYPE OF MATERIALS USED)	FEE
Example: Advanced	60.110	Quilt	\$5.00
			\$
			\$
			\$
			\$
			\$
			\$
			\$
			\$
			\$

TOTAL: \$ \_\_\_\_\_

Long Island Fair  
Old Bethpage Village Restoration  
1303 Round Swamp Road  
Old Bethpage, NY 11804

**LONG ISLAND FAIR NEEDS VOLUNTEERS!!!**  
**ALL ARE WELCOME**  
**(AGES 14 AND UP)**

Help at children's races	Work at the flying horses carousel
Welcome visitors	Judge corn husking contest
Assist at information center	Help with displays
Work the games of skill	Demonstrate a craft
Bring water to thirsty animals	Sell chances for the largest pumpkin
Sell apples, gourds & pumpkins	

For a Volunteer application:

Please visit [Lifair.org](http://Lifair.org) and fill out the  
application online

**COMING TO THE 2022**  
**LONG ISLAND FAIR**

The Flying Cortes Trapeze Thrill Show  
Circus Dubios  
Camel Rides & Petting Zoo  
Puppet Shows-Magic Shows  
Face Painter~Balloon Twister~ Stilt Walker~ Mime  
Historic Trades~Brass Band Concerts~Contra Dancing  
Teddy Roosevelt's Rough Riders